

S  
628.168  
H2perjm  
Jette Meadows,  
Phase II in Lake County, Montana

DEPARTMENT OF HEALTH AND ENVIRONMENTAL SCIENCES

ENVIRONMENTAL SCIENCES DIVISION

Montana State Library



3 0864 1006 8595 0

THOMAS L. JUDGE, GOVERNOR

3 SUNSET PLAZA, KALISPELL, MT 59901



(406) 755-5521

A. C. KNIGHT, M.D., F.C.C.P., DIRECTOR

PLEASE RETURN

STATE DOCUMENTS COLLECTION

1980

MONTANA STATE LIBRARY  
930 E Lyndale Ave.  
Helena, Montana 59601

June 2, 1980

To: R.K. Campbell, M.D., Health Officer, Lake Co  
Dave Erickson, Lake Co. Planner, Polson  
Chairman, Lake Co. Commissioners, Polson  
Montana State Library, Helena  
Environmental Quality Council, Helena  
R. Weddle, Dept. Community Affairs, Helena  
Dept. Fish, Wildlife & Parks, R. Schumacher, J. Posewitz  
State Highway Dept., Helena  
Dept. Natural Resources & Conservation, Helena  
Bureau of Mines & Geology, Butte  
J.B. Seago, USDA Soil Conservation Service, Polson  
SDH&ES-Information Unit, Helena  
Environmental Information Center, Helena  
SDH&ES-Subdivision Bureau, E. Casne, Helena  
J. Byron Christian, Box 929, Polson  
Professional Consultants, Inc., Box 3416, Missoula  
Montana Historical Society, Helena  
Office of the Governor, Helena  
Office of Interstate Sales Registration, Carlton Goodwin, Denver, CO  
Lake Co. Sheriff, Polson  
Homer & Cora Johnson, Polson  
Polson Outdoors, H.W. Black, Box 1432, Polson  
Thurman Trospen, Rt. 1 Box 43, Ronan  
Don Peterson, Westshore Planning Unit, Box 1172, Polson  
Polson Chamber of Commerce

From: Stan C. Strom, R.S., Environmental Sciences Division, Kalispell Regional Office

Subject: Preliminary Environmental Review (PER) for a subdivision known as  
Jette Meadows, Phase II

Ladies & Gentlemen:

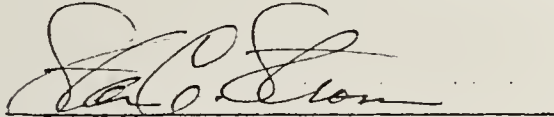
This is to notify you that a Preliminary Environmental Review (PER) has been completed by the Kalispell Regional Office of the Department of Health and Environmental Sciences regarding Jette Meadows, Phase II, a proposed 101 lot subdivision in Lake County, Montana.



Questions and comments will be accepted until June 18, 1980. One extension of time not to exceed seven days will be granted upon request if there is sufficient reason. All comments should be sent to the undersigned.

You should also be aware that this abbreviated evaluation is not an Environmental Impact Statement, but is instead a survey of possible problems leading to the ultimate decision that an Environmental Impact Statement is not warranted.

Respectfully,

A handwritten signature in cursive script, appearing to read "Stan C. Strom", is written over a horizontal line.

Stan C. Strom, R.S.  
Subdivision Bureau  
Environmental Sciences Division



Digitized by the Internet Archive  
in 2017 with funding from  
Montana State Library

[https://archive.org/details/preliminaryenvi1980stro\\_0](https://archive.org/details/preliminaryenvi1980stro_0)

DEPARTMENT OF HEALTH AND ENVIRONMENTAL SCIENCES  
 Kalispell Regional Office  
 3 Sunset Plaza Kalispell, Montana 59901  
 (406)755-5521

PRELIMINARY ENVIRONMENTAL REVIEW

Division/Bureau Environmental Sciences/Subdivision Bureau

Project or Application Jette Meadows, Phase II in Lake County, Montana

Description of Project Phase II has been adjusted to 101 lots on slopes and terraces north of Phase I. It involves lots from 1.3 acres to 4.5 acres in size generally, with large common areas designated, community water system(s) and individual onsite sewage disposal.

POTENTIAL IMPACT ON PHYSICAL ENVIRONMENT

	Major	Moderate	Minor	None	Unknown	Comments on Attached Pages
1. Terrestrial & aquatic life and habitats		XXXX				
2. Water quality, quantity and distribution			XXXX			
3. Geology & soil quality, stability and moisture			XXXX			
4. Vegetation cover, quantity and quality			XXXX			
5. Aesthetics			XXXX			
6. Air quality				XXXX		
7. Unique, endangered, fragile, or limited environmental resources				XXXX		
8. Demands on environmental resources of land, water, air & energy			XXXX			
9. Historical and archaeological sites					XXXX	



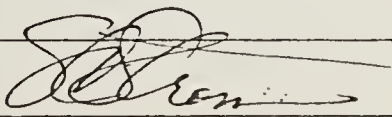
POTENTIAL IMPACTS ON HUMAN ENVIRONMENT

	Major	Moderate	Minor	None	Unknown	Comments on Attached Pages
1. Social structures and mores				XXXX		
2. Cultural uniqueness and diversity				XXXX		
3. Local and state tax base & tax revenue			XXXX			
4. Agricultural or industrial production			XXXX			
5. Human health		XXXX				Note 1
6. Quantity and distribution of community and personal income					XXXX	
7. Access to and quality of recreational and wilderness activities			XXXX			
8. Quantity and distribution of employment				XXXX		
9. Distribution and density of population and housing			XXXX			
10. Demands for government services			XXXX			
11. Industrial & commercial activity				XXXX		
12. Demands for energy			XXXX			
13. Locally adopted environmental plans & goals			XXXX			
14. Transportation networks & traffic flows		XXXX				Note 2

Other groups or agencies contacted or which may have overlapping jurisdiction Lake Co. Planner, D. Erickson  
Lake Co. Sanitarian, P. Trusler

Individuals or groups contributing to this PER. \_\_\_\_\_

Recommendation concerning preparation of EIS Environmental Impact Statement not warranted

PER Prepared by: S.C. Strom, R.S. 

Date: 6/2/80





## PRELIMINARY ENVIRONMENTAL REVIEW

### Jette Meadows Phase II Lake County, Montana

The general area in which this proposal is located has been subjected to previous subdivision involving similar density. The previous phase of this particular subdivision was, however, in an area with much less slope, fewer bedrock problems and little groundwater near the surface. There are few similarities.

Jette Meadows, Phase II consists of a proposed 101 lots next to Highway 93, approximately 5 miles northwest of Polson, MT. Community water systems will supply domestic water but complete details are not yet available.

The proposal is located in an area of magnetite-bearing quartzitic argillite and argillite bedrock, weathered near the surface, with varying glacial overburden of (stony silt loam) till with subangular gravels and cobbles in silty loam. The thickness of the till deposition lessens on the lots higher in elevation and to the southeast. These upper lots have bedrock at 2 to 8 feet from the surface, which is struck in varying directions. The northwestern and north central areas are lower and contain some remnants of glacio-fluvial and alluvial action.

In one area at the northern end of the tract, enough near surface water has been encountered to indicate entrapment by a nonpermeable layer, or a large spring seep. Sewage disposal sites have been designated away from such wet areas.

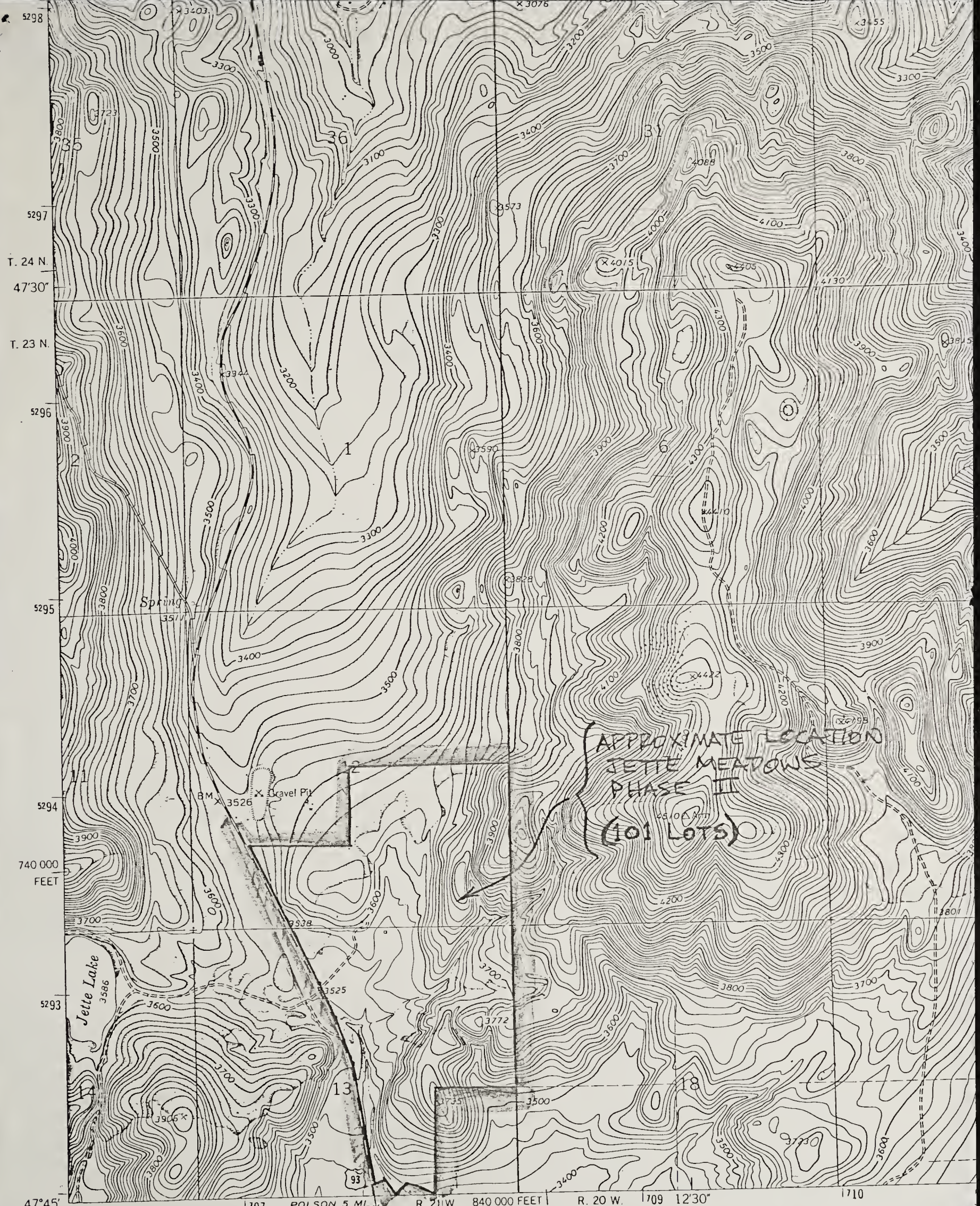
#### Note 1

There are a dozen or more lots of this proposal located in the southern parts of the plat on elevations above 3550 which have certain limitations in regard to sewage disposal. Specifically the near-surface fractured bedrock and evidence of pervasive fractures and striking. These lots, (#88 through 101) also have excessive slopes in some areas and relatively little flexibility in disposal site selection. The human health risk involved in this situation lies in the fact that two or more wells for domestic water sources are presently located on or near these lots, in areas underlain by the same bedrock. Such situations can produce wells contaminated by sewage effluent which can travel great distance in fractured rock. If wells are properly constructed, including casement to consolidated rock, and if sewers are installed in the adequate separation from bedrock interfaces, such contamination is less likely. Not enough information is yet available on well construction to evaluate this risk.

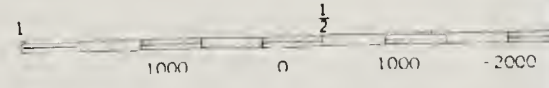
#### Note 2

In recent years over 250 new homesites have been generated in this general area and a related increase in traffic can be anticipated on the highway from 3 or 4 access points in the area. During peak tourist seasons significant congestion could occur in these areas on Highway 93 which is reputedly sensitive to such congestion.

The history of the United States is a complex and multifaceted one, spanning centuries and encompassing a wide range of events and figures. From the early days of European exploration and settlement to the present day, the United States has undergone significant changes and challenges. The story of the United States is one of growth, innovation, and resilience, shaped by the actions of countless individuals and the forces of nature. The early years of the nation were marked by the struggle for independence and the establishment of a new government. The American Revolution was a pivotal moment in the country's history, leading to the birth of a new nation. The years following the Revolution were a time of rapid growth and expansion, as the United States moved westward and established a reputation for innovation and progress. The American Civil War was a defining moment in the nation's history, leading to the abolition of slavery and the strengthening of the federal government. The years following the Civil War were a time of reconstruction and growth, as the United States emerged as a major world power. The American Civil War was a defining moment in the nation's history, leading to the abolition of slavery and the strengthening of the federal government. The years following the Civil War were a time of reconstruction and growth, as the United States emerged as a major world power. The American Civil War was a defining moment in the nation's history, leading to the abolition of slavery and the strengthening of the federal government. The years following the Civil War were a time of reconstruction and growth, as the United States emerged as a major world power.



Mapped, edited, and published by the Geological Survey  
 Control by USGS and USC&GS



BRIDGE!  
 NE

